



£1,850 PCM

Tor Street, Stoke-on-Trent ST1 6HE

Terraced House | 4 Bedrooms | 2 Bathrooms

01782 844 700



www.easymoveuk.com



Step Inside

Key Features

- 4 Bedrooms
- 2 bathrooms
- 2 reception rooms
- Close to all local amenities

Property Description

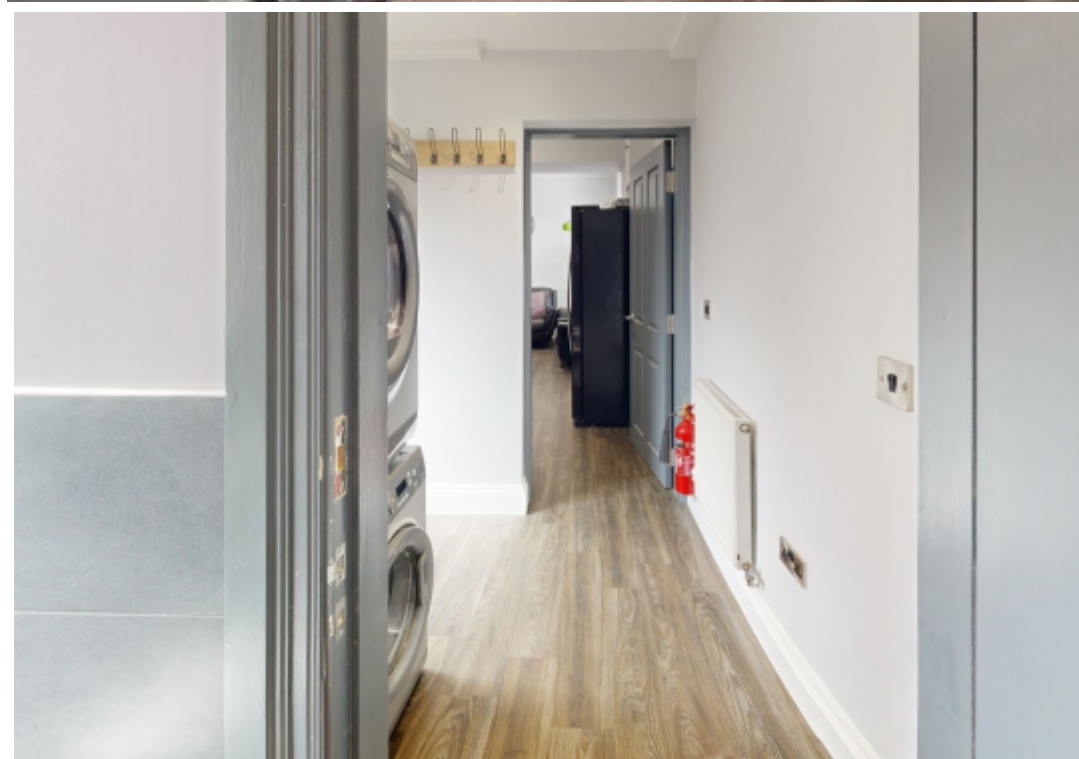
4 bedroom property to rent

Main Particulars

An exceptionally spacious period end townhouse located in Sneyd Green on the outskirts of Stoke-on-Trent. The property provides enormously versatile accommodation with three double bedrooms on the first floor, and two large reception rooms to the ground floor along with a spacious family dining kitchen.

There is gas central heating and double glazing throughout the property.

Where the property is situated gas great access to the city, close to all local amenities, local schools, local shops, local bus route and access to the a50/500.



Telephone: 01782 844 700



www.easymoveuk.com