



£725 PCM

Sage close, Stoke-on-Trent ST1 3SF

Semi-Detached House | 3 Bedrooms | 1 Bathroom

01782 844 700



[www.easymoveuk.com](http://www.easymoveuk.com)



# Step Inside

---

## Key Features

- Semi detached
- 3 bedrooms
- driveway
- family garden
- Close to all local amenities

## Property Description

Family home to rent

## Main Particulars

Well located 3 bedroom semi-detached house, ideal for families, long term let!

Accommodation:

This property offers good living proportions throughout, upon entry there is a ground floor wc which is ideal for the busy day to day family life, a spacious living room with plenty of natural light intake and to the rear an open plan kitchen with space for dining and access to the rear garden. Moving upstairs and you'll find the 3 bedrooms, these are all good sizes so could suit a larger family with children looking to share. The first floor is complete with the family bathroom, this comprises a 3 piece white suite with shower over bath.

Outside Space:

The property benefits from 2 good sized gardens that are both laid to lawn, there is parking available to the rear of the property as well as on street parking is readily available.

Local Information:

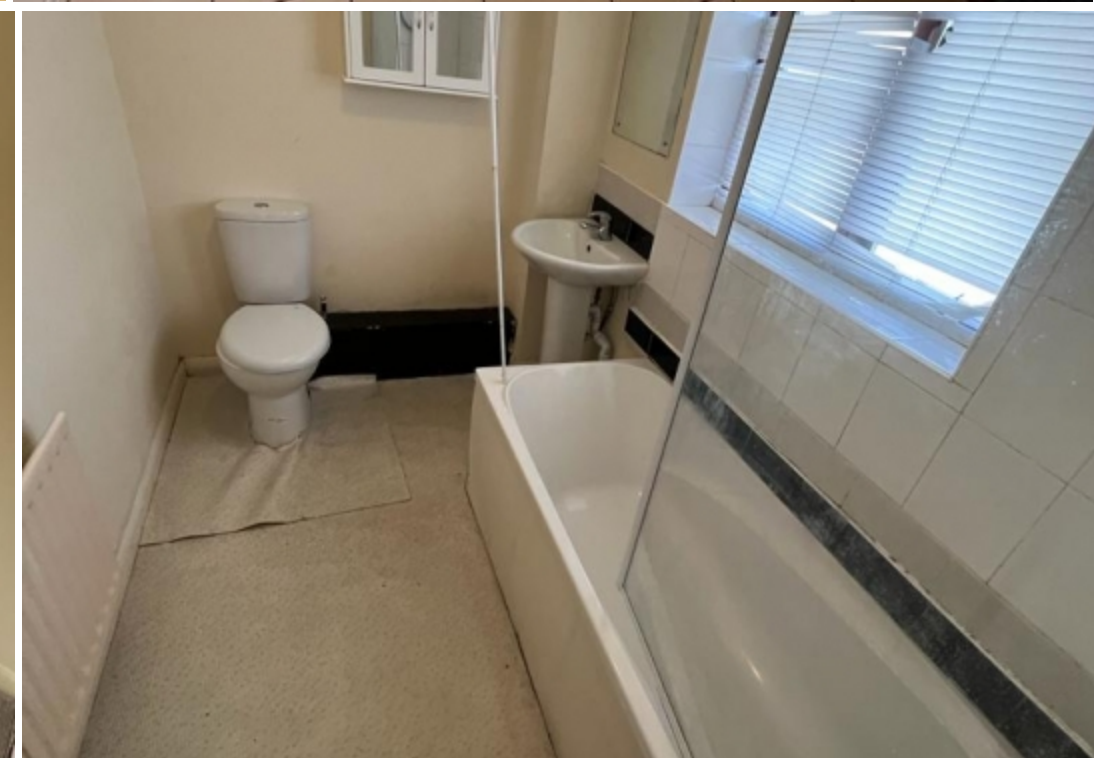
Situated in a quiet close this is the ideal place to bring up your family, you are also well connected to local school which include Waterside Primary School Thistley Hough Academy. Other local amenities include Hanley Park which is a great place to exercise or feed the ducks with your children, plenty of supermarkets, cinema, cafes and restaurants.

An early enquiry is highly advised, call Easy move on for more details.

The successful applicant must have a provable household income of £21,750

Deposit: £836





Telephone: 01782 844 700



---

[www.easymoveuk.com](http://www.easymoveuk.com)