



£81,500 Monthly

Lowther Street, Hanley, Stoke-on-Trent, Staffordshire

Terraced House | 2 Bedrooms | 1 Bathroom

01782 844 700



www.easymoveuk.com



Step Inside

Key Features

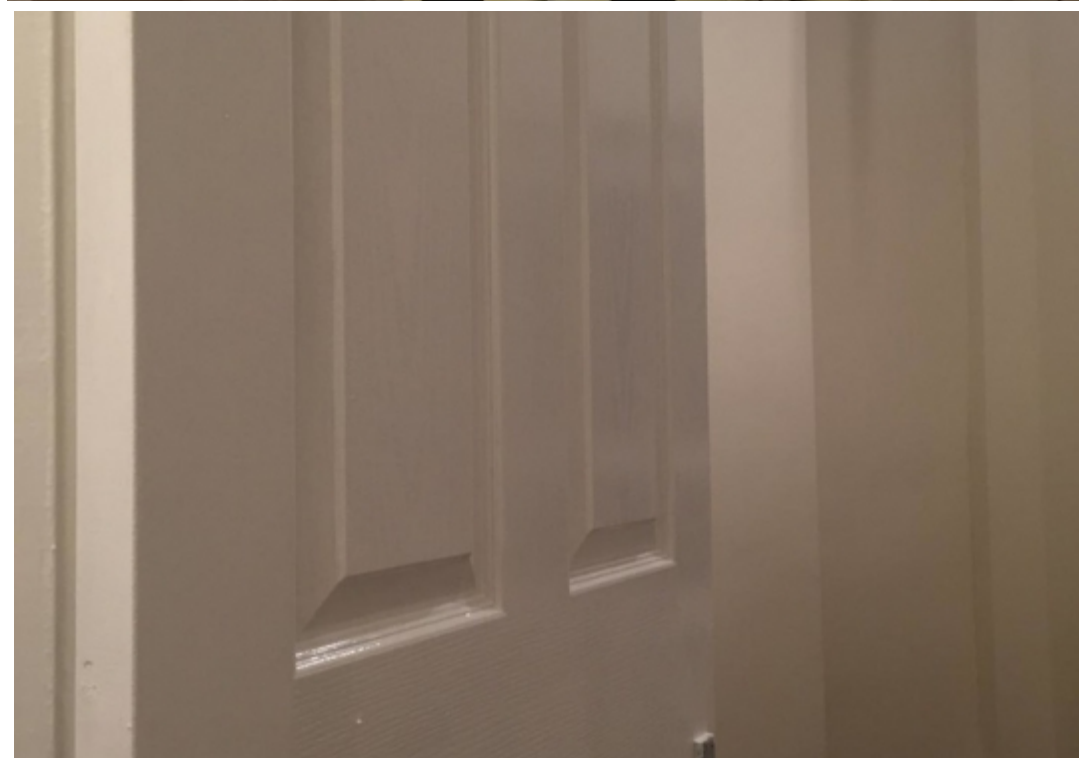
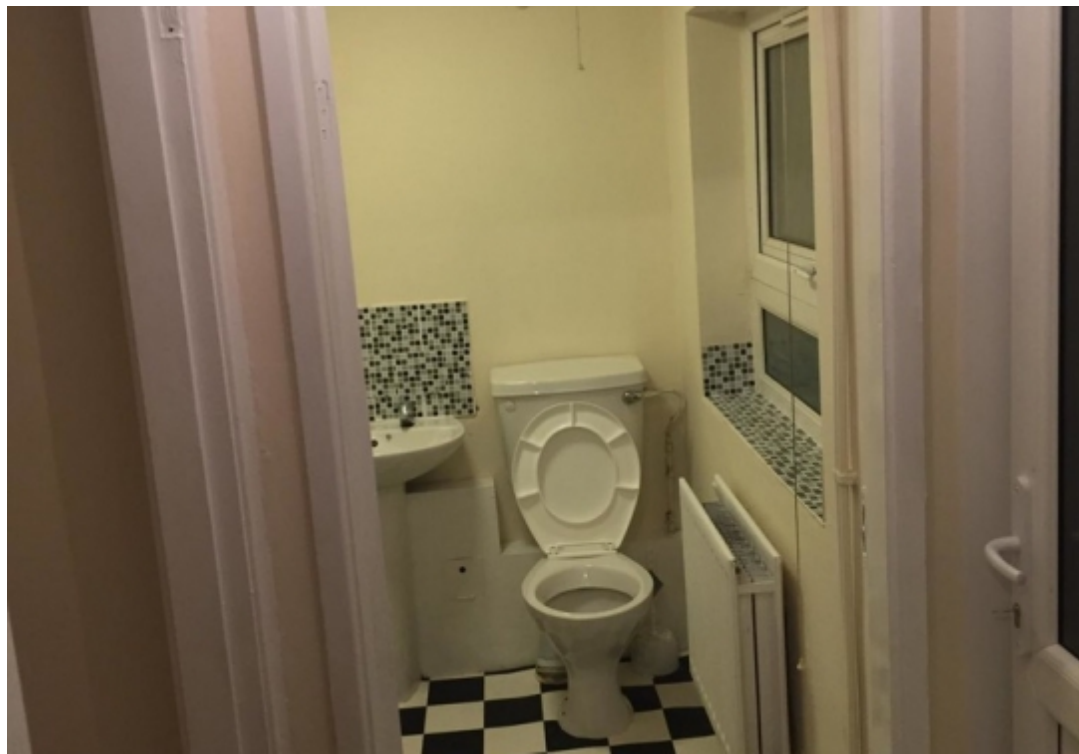
- Double Glazing
- Gas Central Heating
- Modern Kitchen
- CLOSE TO ALL LOCAL AMENITIES

Property Description

Property to let

Main Particulars

Easy move property agents are pleased to present this lovely 2 bedroom house in the heart of Hanley. This spacious 2 bedroom house with 2 reception rooms is close to all local amenities and local schools. It is a 10 minute walk into the town centre and also a 5 minute walk to the retail park.



Telephone: 01782 844 700



www.easymoveuk.com